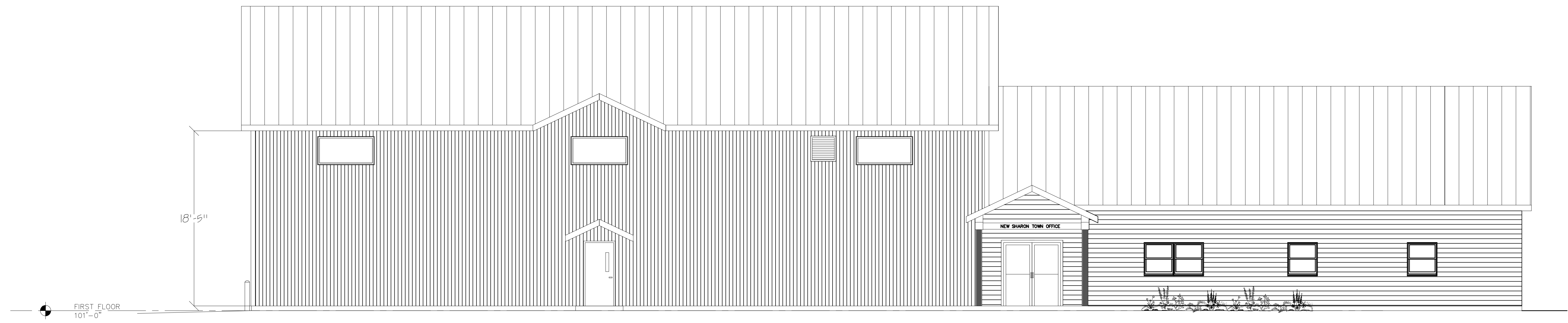


FILE LOCATION: N:\CAD\Land Projects\2019\27-19 New Sharon Structural\dwg\27-19 Town Office Plans 1.dwg / SAVED BY: MARK / FILE SIZE: 1.43MB / DATE: 2/13/2020 10:06 AM



① NORTH ELEVATION
SCALE: 1/8"=1'-0"

| No. | Revisions | Date | App'd. |
|-------------------------------------------------------------------------------------------------------------|-----------|-------------------|-----------|
| NEW MUNICIPAL BUILDING | | | |
| 11 SCHOOLHOUSE LANE | | NEW SHARON, MAINE | |
| PROPOSED NORTH ELEVATION | | | |
| | | | Sheet No. |
| Drawn By: MEM Scale: AS SHOWN Checked By: MJD Date: 02/13/2020 Approved By: AEH Date: | | | 2 |
| <small>PRELIMINARY WITHOUT ORIGINAL SIGNATURE AND SEAL</small> File No. 27-19.dwg Project No. 27-19 | | | Of 2 |